



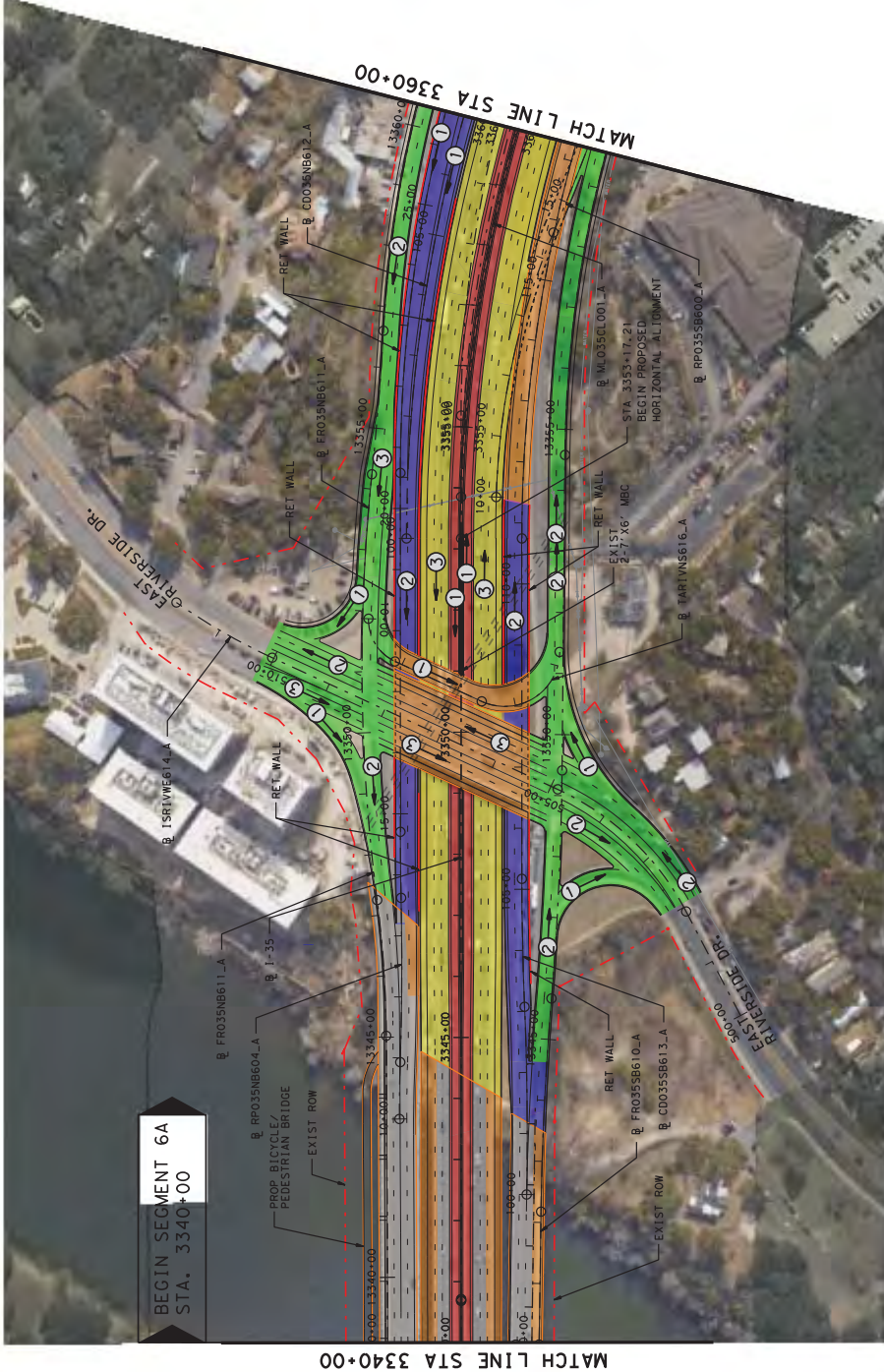
---

I-35 Capital Area Improvement Program  
Corridor Implementation Plan  
Appendix B  
Refined Improvements Concepts

---

**This Page Intentionally Left Blank**

**PRELIMINARY  
SUBJECT TO CHANGE**



**LEGEND:**

	REMOVAL
	CAP
	PARTIAL CAP
	EXISTING ROW
	PROPOSED ROW
	PROPOSED CENTERLINE/BASELINE
	PROPOSED RETAINING WALL
	NUMBER OF LANES (TRAFFIC DIRECTION)
	FUTURE TRANSPORTATION CORRIDOR
	MAIN LANE
	FRONTAGE ROAD/ INTERSECTION
	COLLECTOR DISTRIBUTOR/ DIRECT CONNECTOR/RAMP
	BRIDGE
	MILL AND OVERLAY EXISTING PAVEMENT

- NOTES:**
- EXISTING DRAINAGE STRUCTURES SHOWN INCLUDE MAJOR FEMA CROSSINGS ONLY.
  - REFER TO HORIZONTAL ALIGNMENT DATA REPORTS FOR CURVE DATA.
  - THE INFORMATION SHOWN ON THIS DRAWING CONCERNING TYPE AND LOCATION OF UNDERGROUND UTILITIES IS NOT GUARANTEED TO BE ACCURATE. INVESTIGATE AND VERIFY ALL UTILITIES IN THE FIELD VERIFIED PRIOR TO BEGINNING CONSTRUCTION ACTIVITIES.



I-35 CAIP  
FROM: SH 45N TO SH 45S

**PLAN SHEET  
SEGMENT 6A**

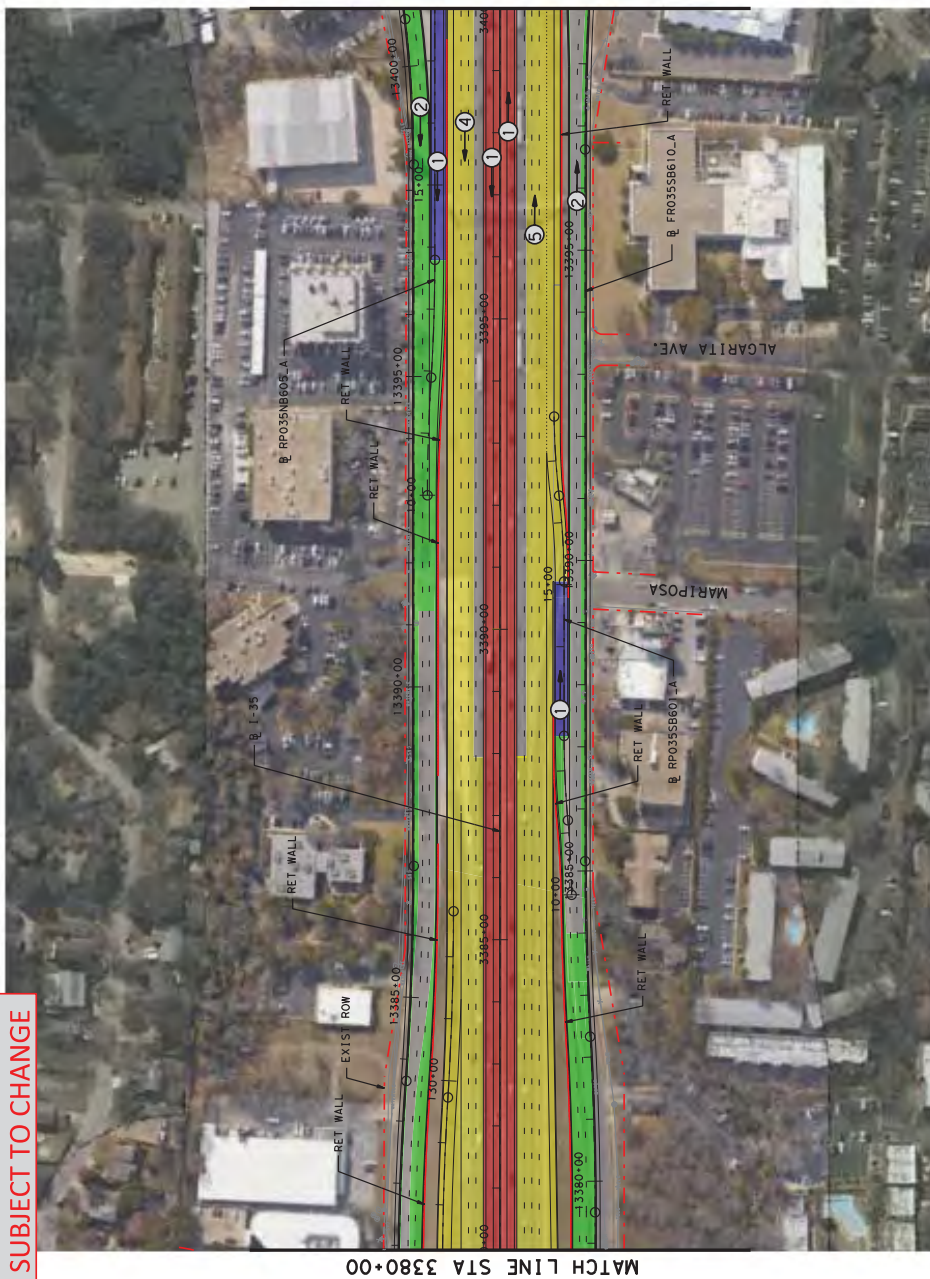
STA. 3340+00 TO STA. 3360+00

INTERIM REVIEW ONLY  
Documents are not intended for  
construction.  
Engineer: LESLEY W. SHORT  
P.E. Serial No. 169192  
Date: 7/30/2013

1" = 200' (H)



**PRELIMINARY  
SUBJECT TO CHANGE**



INTERIM REVIEW ONLY  
 Documents prepared by:  
 Engineer: LESLEY W. SHORT  
 P.E. Serial No. 169192  
 Date: 7/30/2013

1" = 200' (H)



I-35 CAIP  
 FROM: SH 45N TO SH 45S

**PLAN SHEET  
SEGMENT 6A**

STA. 3380+00 TO STA. 3400+00

SHEET 4 OF 5  
 REF. SCHEMATIC ROLL 9 OF 15

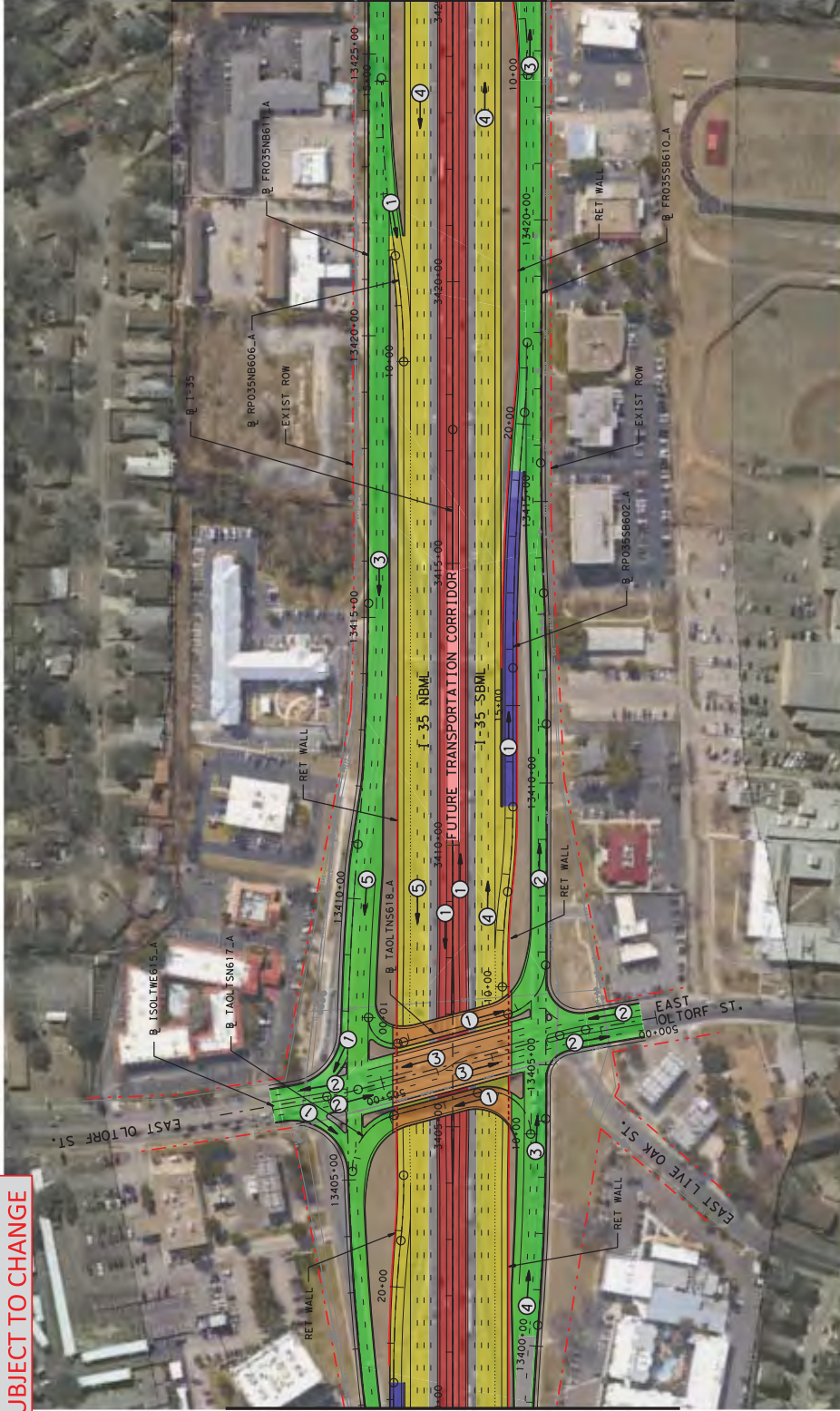
**LEGEND:**

- REMOVAL
- CAP
- PARTIAL CAP
- EXISTING ROW
- PROPOSED ROW
- PROPOSED CENTERLINE/BASELINE
- PROPOSED RETAINING WALL
- MILL AND OVERLAY
- EXISTING PAVEMENT
- FUTURE TRANSPORTATION CORRIDOR
- MAIN LANE
- FRONTAGE ROAD/ INTERSECTION
- COLLECTOR/DISTRIBUTOR/DIRECT CONNECTOR/RAMP
- BRIDGE
- MILL AND OVERLAY
- EXISTING PAVEMENT
- REMOVAL
- CAP
- PARTIAL CAP
- EXISTING ROW
- PROPOSED ROW
- PROPOSED CENTERLINE/BASELINE
- PROPOSED RETAINING WALL
- MILL AND OVERLAY
- EXISTING PAVEMENT
- FUTURE TRANSPORTATION CORRIDOR
- MAIN LANE
- FRONTAGE ROAD/ INTERSECTION
- COLLECTOR/DISTRIBUTOR/DIRECT CONNECTOR/RAMP
- BRIDGE
- MILL AND OVERLAY
- EXISTING PAVEMENT
- NUMBER OF LANES (TRAFFIC DIRECTION)

**NOTES:**

1. EXISTING DRAINAGE STRUCTURES SHOWN INCLUDE MAJOR FEMA CROSSINGS ONLY.
2. REFER TO HORIZONTAL ALIGNMENT DATA REPORTS FOR CURVE DATA.
3. THE INFORMATION SHOWN ON THIS DRAWING CONCERNING TYPE AND LOCATION OF UNDERGROUND UTILITIES IS NOT GUARANTEED TO BE ACCURATE. INVESTIGATE AND VERIFY ALL UTILITIES IN THE FIELD PRIOR TO BEGINNING CONSTRUCTION ACTIVITIES.

**PRELIMINARY  
SUBJECT TO CHANGE**



MATCH LINE STA 3400+00

MATCH LINE STA 3425+00



INTERIM REVIEW ONLY  
 Document prepared for  
 Engineer: LESLEY W. SHORT  
 P.E. Serial No. 169192  
 Date: 7/30/2013

1" = 200' (H)



I-35 CAIP  
 FROM: SH 45N TO SH 45S

**PLAN SHEET  
 SEGMENT 6A**

STA. 3400+00 TO STA. 3425+00

SHEET 5 OF 5  
 REF SCHEMATIC ROLL 9 OF 15

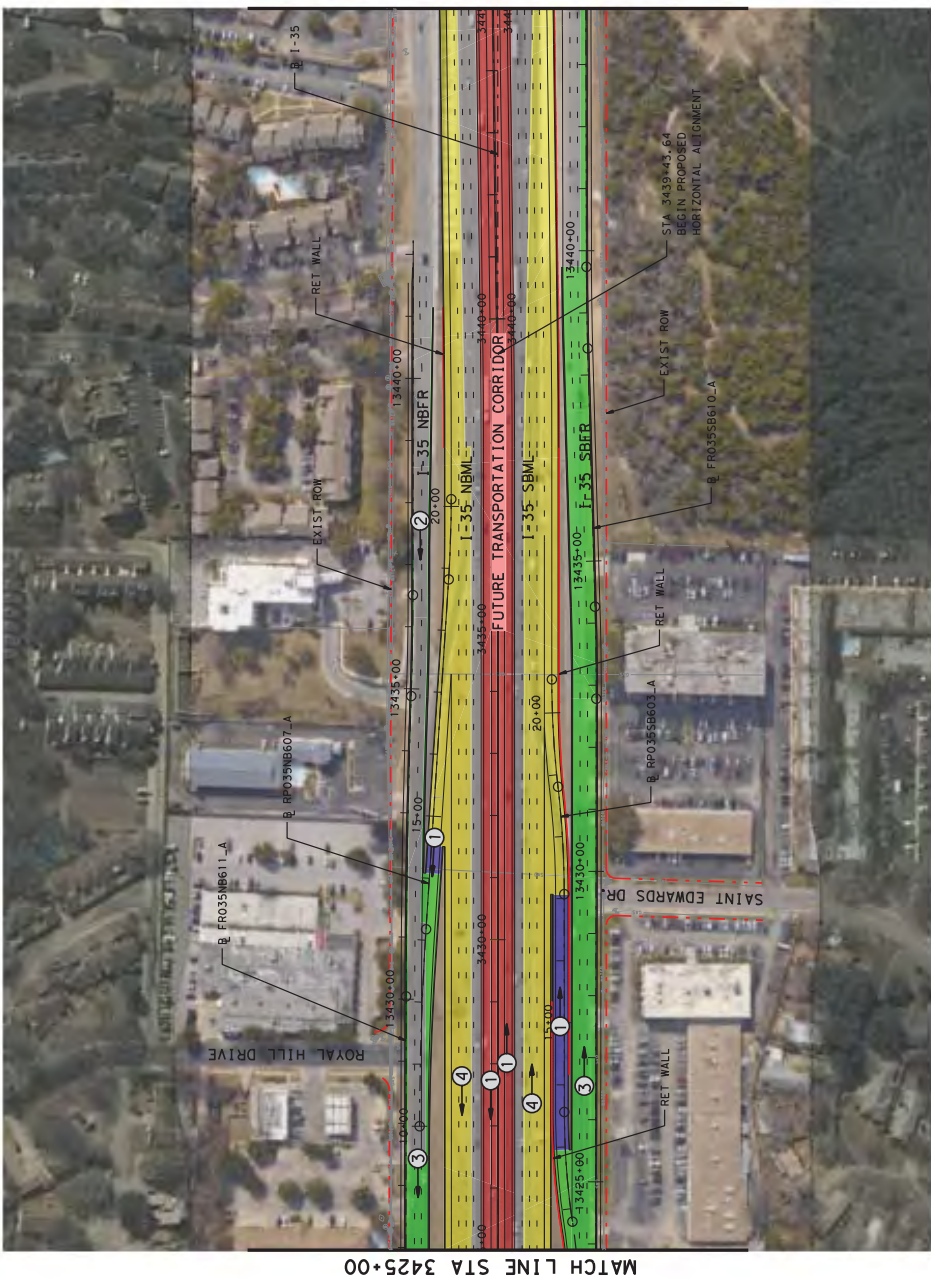
**LEGEND:**

- |  |   |
|--|---|
|  | REMOVAL                                     |
|  | CAP   |
|  | PARTIAL CAP                                 |
|  | EXISTING ROW                                |
|  | PROPOSED ROW                                |
|  | PROPOSED CENTERLINE/BASELINE                |
|  | PROPOSED RETAINING WALL                     |
|  | NUMBER OF LANES (TRAFFIC DIRECTION)         |
|  | FUTURE TRANSPORTATION CORRIDOR              |
|  | MAIN LANE                                   |
|  | FRONTAGE ROAD/INTERSECTION                  |
|  | COLLECTOR DISTRIBUTOR/DIRECT CONNECTOR/RAMP |
|  | BRIDGE                                      |
|  | MILL AND OVERLAY EXISTING PAVEMENT          |

**NOTES:**

- EXISTING DRAINAGE STRUCTURES SHOWN INCLUDE MAJOR FEMA CROSSINGS ONLY.
- REFER TO HORIZONTAL ALIGNMENT DATA REPORTS FOR CURVE DATA.
- THE INFORMATION SHOWN ON THIS DRAWING CONCERNING TYPE AND LOCATION OF UNDERGROUND UTILITIES IS NOT GUARANTEED TO BE ACCURATE. INVESTIGATE AND VERIFY ALL UTILITIES IN THE FIELD PRIOR TO BEGINNING CONSTRUCTION ACTIVITIES.

**PRELIMINARY  
SUBJECT TO CHANGE**



**LEGEND:**

	REMOVAL
	CAP
	PARTIAL CAP
	EXISTING ROW
	PROPOSED ROW
	PROPOSED CENTERLINE/BASELINE
	PROPOSED RETAINING WALL
	MILL AND OVERLAY
	EXISTING PAVEMENT
	FUTURE TRANSPORTATION CORRIDOR
	MAIN LANE
	FRONTAGE ROAD/INTERSECTION
	COLLECTOR DISTRIBUTOR/DIRECT CONNECTOR/RAMP
	BRIDGE
	MILL AND OVERLAY
	EXISTING PAVEMENT
	NUMBER OF LANES (TRAFFIC DIRECTION)

- NOTES:**
- EXISTING DRAINAGE STRUCTURES SHOWN INCLUDE MAJOR FEMA CROSSINGS ONLY.
  - REFER TO HORIZONTAL ALIGNMENT DATA REPORTS FOR CURVE DATA.
  - THE INFORMATION SHOWN ON THIS DRAWING CONCERNING TYPE AND LOCATION OF UNDERGROUND UTILITIES IS NOT GUARANTEED TO BE ACCURATE. INVESTIGATE AND VERIFY ALL UTILITIES IN THE FIELD VERIFIED PRIOR TO BEGINNING CONSTRUCTION ACTIVITIES.



MATCH LINE STA 3445+00

MATCH LINE STA 3425+00

INTERIM REVIEW ONLY  
 Document prepared for  
 Client: LESLEY W. SHORT  
 Engineer: LESLEY W. SHORT  
 P.E. Serial No.: 69192  
 Date: 7/30/2013

1" = 200' (H)



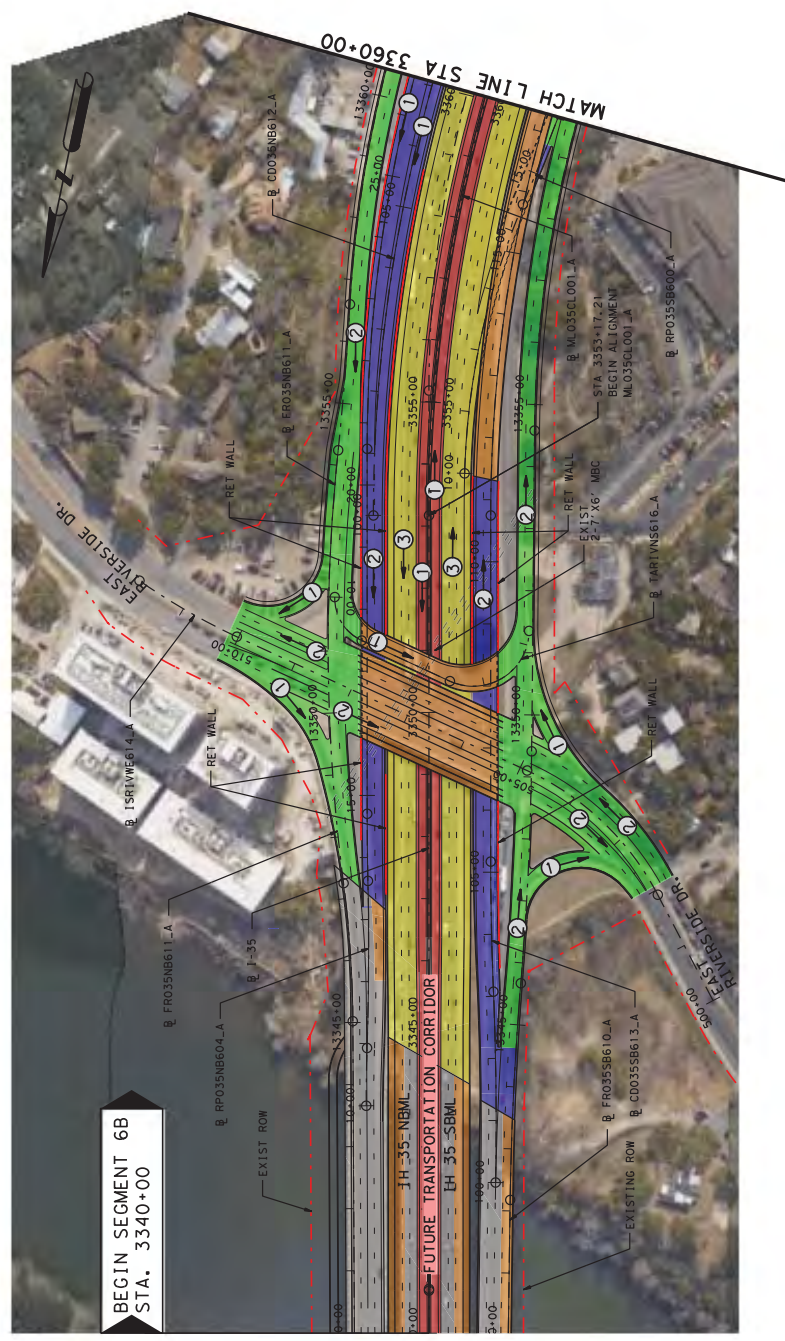
I-35 CAIP  
 FROM: SH 45N TO SH 45S

PLAN SHEET  
 SEGMENT 6B

STA. 3425+00 TO STA. 3445+00

SHEET 1 OF 5  
 REF SCHEMATIC ROLL TO 01F15

**PRELIMINARY  
SUBJECT TO CHANGE**



**LEGEND:**

	REMOVAL
	FUTURE TRANSPORTATION CORRIDOR
	MAIN LANE
	FRONTAGE ROAD/ INTERSECTION
	COLLECTOR DISTRIBUTOR/ DIRECT CONNECTOR/RAMP
	BRIDGE
	MILL AND OVERLAY EXISTING PAVEMENT
	CAP
	PARTIAL CAP
	EXISTING ROW
	PROPOSED ROW
	PROPOSED CENTERLINE/BASELINE
	PROPOSED RETAINING WALL
	NUMBER OF LANES (TRAFFIC DIRECTION)

- NOTES:**
- EXISTING DRAINAGE STRUCTURES SHOWN INCLUDE MAJOR FEMA CROSSINGS ONLY.
  - REFER TO HORIZONTAL ALIGNMENT DATA REPORTS FOR CURVE DATA.
  - THE INFORMATION SHOWN ON THIS DRAWING CONCERNING TYPE AND LOCATION OF UNDERGROUND UTILITIES IS NOT GUARANTEED TO BE ACCURATE. INVESTIGATE AND VERIFY ALL UTILITIES IN THE FIELD PRIOR TO BEGINNING CONSTRUCTION ACTIVITIES.

INTERIM REVIEW ONLY  
Documents prepared for  
the project by  
Engineer: LESLEY W. SHORT  
P.E. Serial No. 169192  
Date: 7/30/2013

1" = 200' (H)



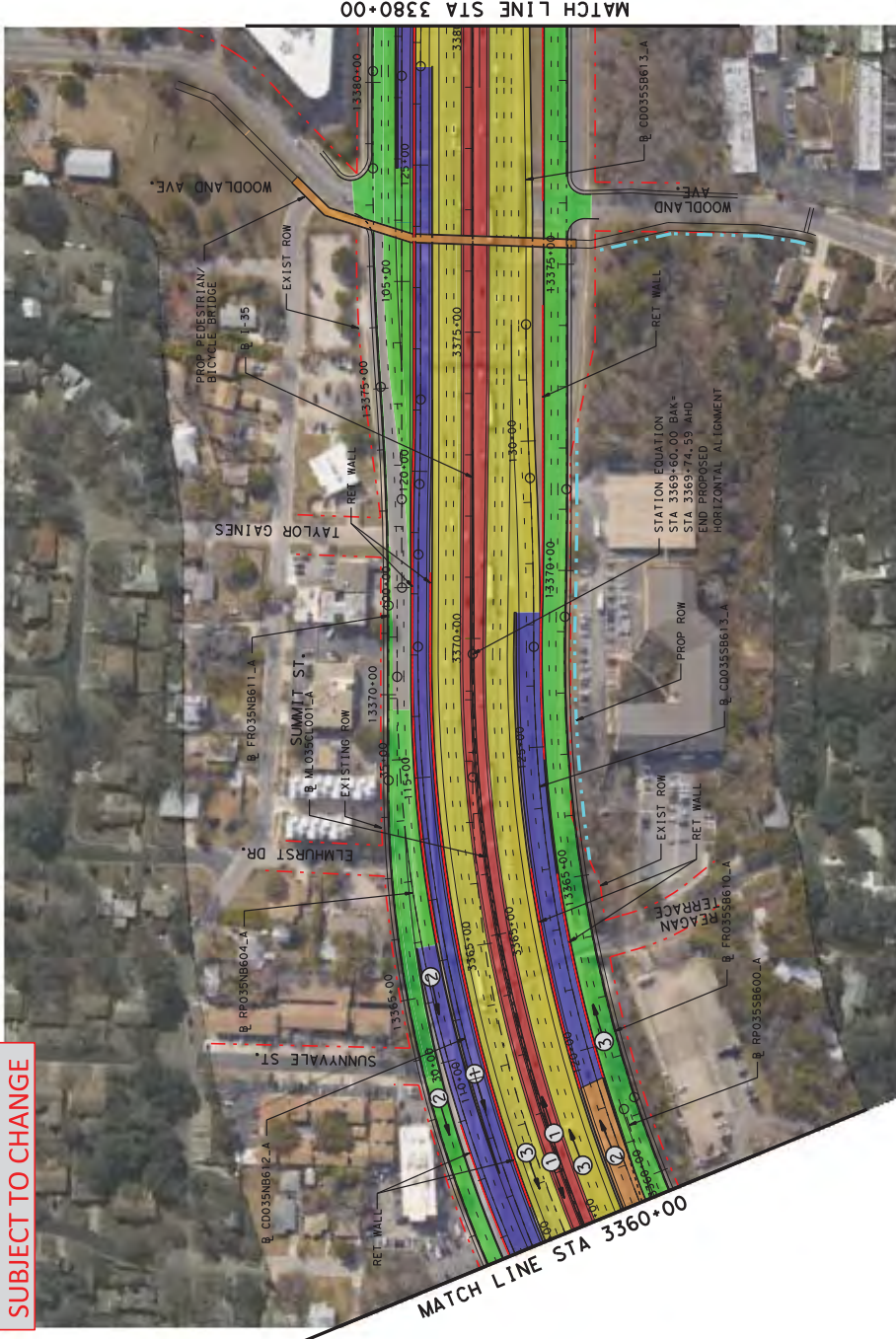
I-35 CAIP  
FROM: SH 45N TO SH 45S

PLAN SHEET  
SEGMENT 6B

STA. 3340+00 TO STA. 3360+00

SHEET 1 OF 5  
REF SCHEMATIC ROLL BB OF 15

**PRELIMINARY  
SUBJECT TO CHANGE**



INTERIM REVIEW ONLY  
 Document prepared for  
 the project of  
 Engineer: LESLEY W. SHORT  
 P.E. Serial No.: 69192  
 Date: 7/30/2013

1" = 200' (H)



I-35 CAIP  
 FROM: SH 45N TO SH 45S

**PLAN SHEET  
 SEGMENT 6B**

STA. 3360+00 TO STA. 3380+00

SHEET 2 OF 5  
 REF SCHEMATIC ROLL 9 OF 15

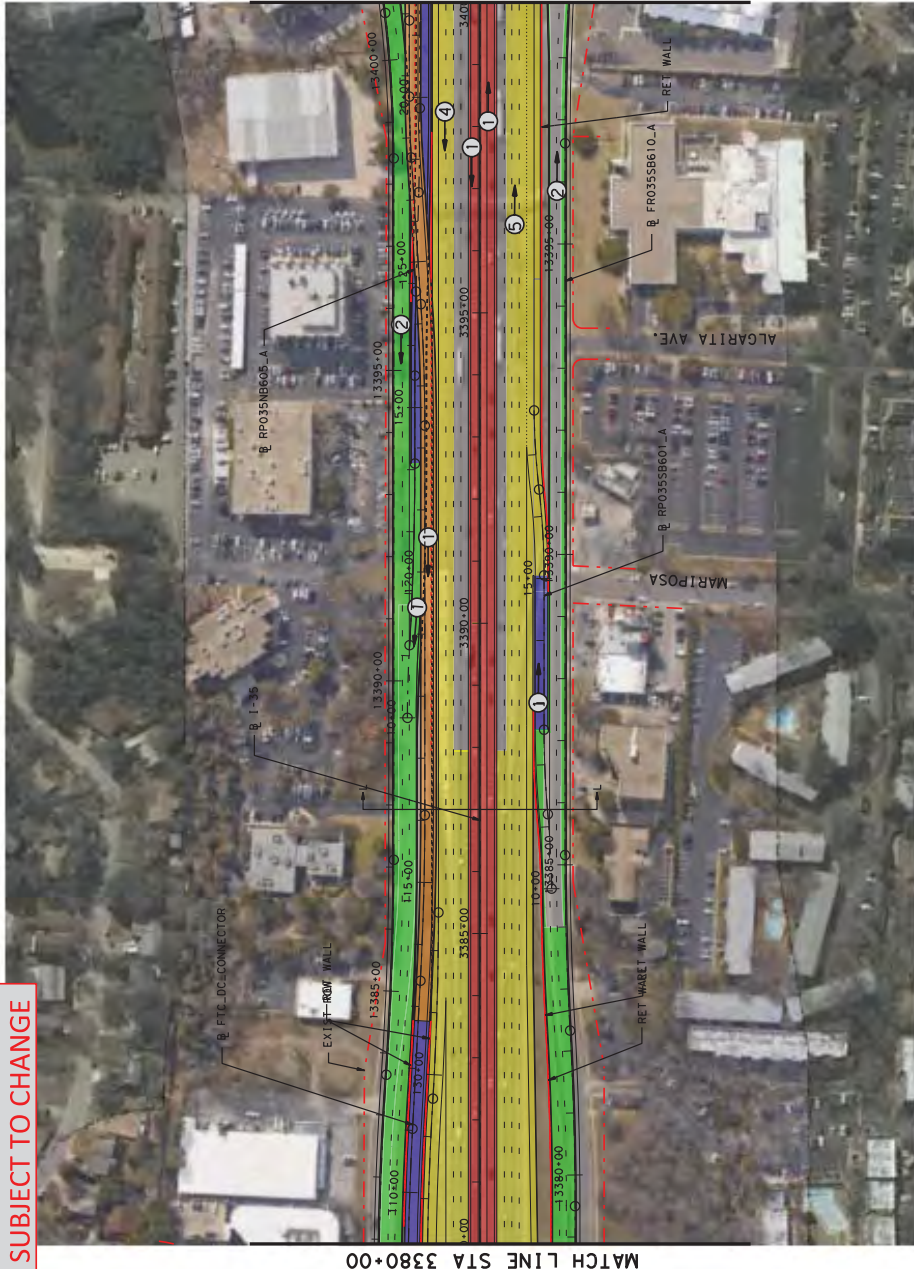
**LEGEND:**

- FUTURE TRANSPORTATION CORRIDOR
- MAIN LANE
- FRONTAGE ROAD/ INTERSECTION
- COLLECTOR DISTRIBUTOR/ DIRECT CONNECTOR/RAMP
- BRIDGE
- MILL AND OVERLAY
- EXISTING PAVEMENT
- REMOVAL
- CAP
- PARTIAL CAP
- EXISTING ROW
- PROPOSED ROW
- PROPOSED CENTERLINE/BASELINE
- PROPOSED RETAINING WALL
- NUMBER OF LANES (TRAFFIC DIRECTION)

**NOTES:**

1. EXISTING DRAINAGE STRUCTURES SHOWN INCLUDE MAJOR FEMA CROSSINGS ONLY.
2. REFER TO HORIZONTAL ALIGNMENT DATA REPORTS FOR CURVE DATA.
3. THE INFORMATION SHOWN ON THIS DRAWING CONCERNING TYPE AND LOCATION OF UNDERGROUND UTILITIES IS NOT GUARANTEED TO BE ACCURATE. CONTRACTORS SHALL VERIFY ALL UTILITIES IN THE FIELD PRIOR TO BEGINNING CONSTRUCTION ACTIVITIES.

**PRELIMINARY  
SUBJECT TO CHANGE**



INTERIM REVIEW ONLY  
 Document prepared for  
 the project of  
 Engineer: LESLEY W. SHORT  
 P.E. Serial No. 169192  
 Date: 7/30/2013

1" = 200' (H)



I-35 CAIP  
 FROM: SH 45N TO SH 45S

**PLAN SHEET  
 SEGMENT 6B**

STA. 3380+00 TO STA. 3400+00

SHEET 3 OF 5  
 REF SCHEMATIC ROLL 9B OF 15

**LEGEND:**

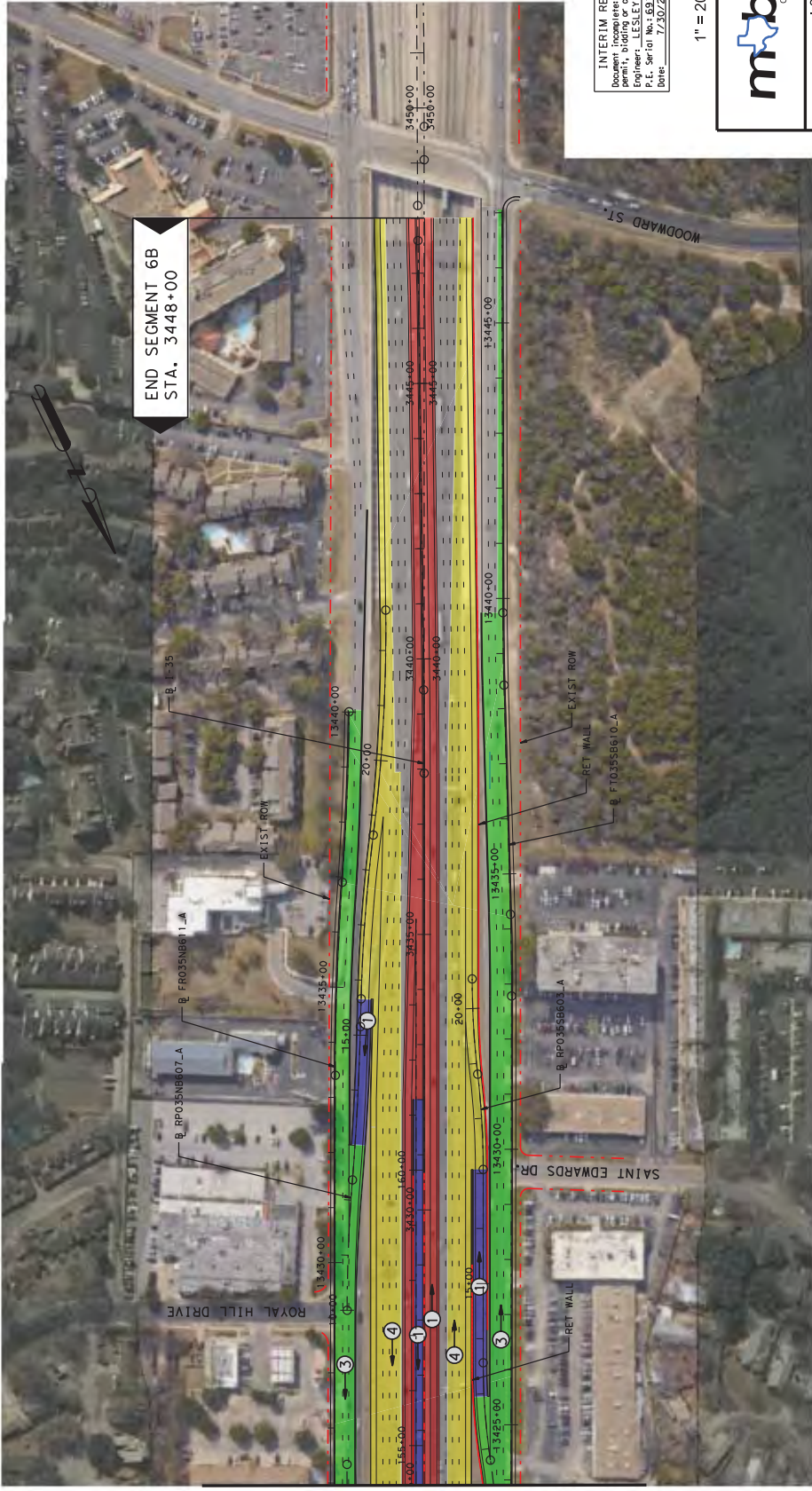
	REMOVAL
	CAP
	PARTIAL CAP
	EXISTING ROW
	PROPOSED ROW
	PROPOSED CENTERLINE/BASELINE
	BRIDGE
	MILL AND OVERLAY
	EXISTING PAVEMENT
	FUTURE TRANSPORTATION CORRIDOR
	MAIN LANE
	FRONTAGE ROAD/ INTERSECTION
	COLLECTOR DISTRIBUTOR/ DIRECT CONNECTOR/RAMP
	PROPOSED RETAINING WALL
	NUMBER OF LANES (TRAFFIC DIRECTION)

- NOTES:**
- EXISTING DRAINAGE STRUCTURES SHOWN INCLUDE MAJOR FEMA CROSSINGS ONLY.
  - REFER TO HORIZONTAL ALIGNMENT DATA REPORTS FOR CURVE DATA.
  - THE INFORMATION SHOWN ON THIS DRAWING CONCERNING TYPE AND LOCATION OF UNDERGROUND UTILITIES IS NOT GUARANTEED TO BE ACCURATE. ENGINEERS WILL INVESTIGATE AND VERIFY FIELD VERIFIED PRIOR TO BEGINNING CONSTRUCTION ACTIVITIES.



**PRELIMINARY  
SUBJECT TO CHANGE**

Pen Tbl rtr: kxos2w5fepnrdleco.tb1  
 Design Ftl rtr: 46215-S-RD-PL09B.dgn  
 Model Name: Roll1.05  
 Scale: 1:200  
 Plotted On: 7/30/2013 6:00:22 PM



**END SEGMENT 6B  
STA. 3448+00**

INTERIM REVIEW ONLY  
 Document prepared for  
 Engineer: LESLEY W. SHORT  
 P.E. Serial No. 169192  
 Date: 7/30/2013

1" = 200' (H)



I-35 CAIP  
 FROM: SH 45N TO SH 45S  
**PLAN SHEET  
 SEGMENT 6B**  
 STA. 3425+00 TO STA. 3448+00

SHEET 5 OF 5  
 REF SCHEMATIC ROLL 9B OF 15

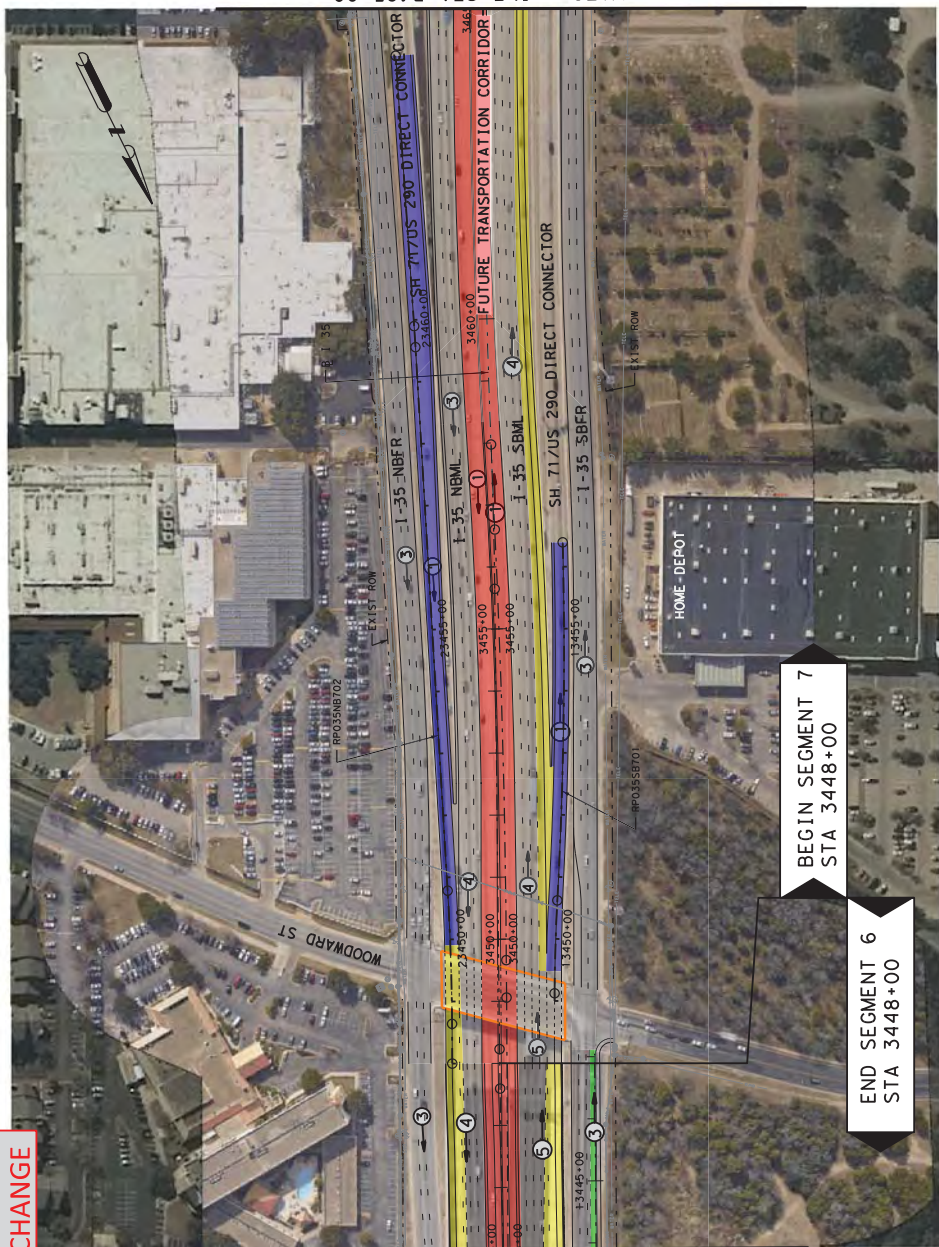
**LEGEND:**

- |  |  |
|--|--|
|  | REMOVAL                                      |
|  | CAP  |
|  | PARTIAL CAP                                  |
|  | EXISTING ROW                                 |
|  | PROPOSED ROW                                 |
|  | PROPOSED CENTERLINE/BASELINE                 |
|  | PROPOSED RETAINING WALL                      |
|  | NUMBER OF LANES (TRAFFIC DIRECTION)          |
|  | FUTURE TRANSPORTATION CORRIDOR               |
|  | MAIN LANE                                    |
|  | FRONTAGE ROAD/ INTERSECTION                  |
|  | COLLECTOR/DISTRIBUTOR/ DIRECT CONNECTOR/RAMP |
|  | BRIDGE                                       |
|  | MILL AND OVERLAY EXISTING PAVEMENT           |

**NOTES:**

- EXISTING DRAINAGE STRUCTURES SHOWN INCLUDE MAJOR FEMA CROSSINGS ONLY.
- REFER TO HORIZONTAL ALIGNMENT DATA REPORTS FOR CURVE DATA.
- THE INFORMATION SHOWN ON THIS DRAWING CONCERNING TYPE AND LOCATION OF UNDERGROUND UTILITIES IS NOT GUARANTEED TO BE ACCURATE. ENGINEERS WILL INVESTIGATE AND VERIFY FIELD CONDITIONS PRIOR TO BEGINNING CONSTRUCTION ACTIVITIES.

**PRELIMINARY  
SUBJECT TO CHANGE**



**LEGEND:**

	REMOVAL
	FUTURE TRANSPORTATION CORRIDOR
	MAIN LANE
	FRONTAGE ROAD/ INTERSECTION
	COLLECTOR DISTRIBUTOR/ DIRECT CONNECTOR/RAMP
	BRIDGE
	MILL AND OVERLAY EXISTING PAVEMENT
	LID
	EXISTING ROW
	PROPOSED ROW
	PROPOSED CENTERLINE/BASELINE
	PROPOSED RETAINING WALL
	NUMBER OF LANES (TRAFFIC DIRECTION)

**NOTES:**

- EXISTING DRAINAGE STRUCTURES SHOWN INCLUDE MAJOR FEMA CROSSINGS ONLY.
- REFER TO HORIZONTAL ALIGNMENT DATA REPORTS FOR CURVE DATA.
- THE INFORMATION SHOWN ON THIS DRAWING CONCERNING TYPE AND LOCATION OF UNDERGROUND UTILITIES IS NOT GUARANTEED TO BE ACCURATE. INVESTIGATE AND VERIFY ALL UTILITIES IN THE FIELD VERIFIED PRIOR TO BEGINNING CONSTRUCTION ACTIVITIES.

INTERIM REVIEW ONLY  
Document incomplete: not intended for permit, bidding or construction.  
Project Name: I-35 CAIP  
P.E. Serial No.: 44290  
Date: 8/1/2013

1" = 200' (H)



I-35 CAIP  
FROM: SH 45N TO SH 45S  
**PLAN SHEET  
SEGMENT 6 & 7**

STA 3445+00 TO STA 3465+00